

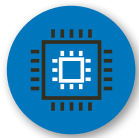


XT4, NEW GENERATION TRACKING-UNIT

with IoT-gateway functionality



**REAL TIME
TRACK & TRACE**



**MET RFID GATEWAY
FUNCTIONALITEIT**



**REMOTE DOWNLOAD
TACHOGRAAF EN
CANBUS DATA**



**CANBUS
AUTOMATIC
SYSTEM UPDATES**



GEOFENCING

The XT4 is the core of our Fleet & Asset Management system. It acts as a gateway that generates all the necessary data for the various business processes of our customers.

The new generation tracking unit with RFID gateway technology is installed in any type of vehicle ranging from a car, van or truck to heavier equipment such as a crane, bulldozer or shovel.

In addition to real-time monitoring of the exact location and route travelled by the vehicle or asset, the XT4 unit is equipped as standard with additional functionalities that can be switched on or off as required.

ADDITIONAL FUNCTIONALITIES

- Monitor driver behaviour easily: acceleration, braking, cornering, bumps and speed
- Record and translate data from temperature-, door sensors and RFID tags within the system
- Read and download tachograph data remotely
- Monitor running hours of vehicle or machine through CANbus or free I/O ports
- Guaranteed 100% accurate mileage registration by connecting the CANbus to the odo-meter
- Get insight into fuel consumption and driving behaviour with the connected CANbus module
- Make CO² emission calculations and -reports easily with our software

The XT4 meets all security, privacy and continuity requirements. The unit is available as XT4 Compact and XT4 Rugged with waterproof housing.



SPECIFICATIONS XT4

- Live track & trace
- Dimensions 179x88x23 mm (incl. housing)
- NFC technology- Bluetooth 5.2
- RFID gateway technology
- Internal GPS and 4G modem
- Input Volt Range 0-100V- Lithium polymer battery 3.7V/2000mAh with IP54 casing
- Integrated CANbus adapter (Connected Canbus)
- Driver behaviour (acceleration, braking, turning, speed)
- Remote download Digitacho module (compatible with smart tacho)
- XT4 Rugged includes battery 5000mAh and optional 10000 mAh, with waterproof IP67 housing

OPTIONAL

- Enhanced with DriverID and trip classification
- Temperature sensors
 - Measuring range from - 50°C to 80°C.
 - Max. deviation $\pm 0.25^{\circ}\text{C}$.
 - Waterproof IP67 housing
 - Range 50+ metres
 - UL, UN38.3 and RoHS certified
- Door opening sensors
 - Operating temperature from - 45°C to 60°C
 - Waterproof IP67 housing
 - Battery life approx 5 years
- RFID Asset Tags

ALL IN ONE

The system is modular, as is the pricing of the product. You pay according to what you take away. Functionalities can be switched on or off remotely. Since GPS Buddy develops and manages the hardware, firmware and software itself, everything is tuned to each other and we move with the trends and needs in the market. The result is that our systems are in vehicles for longer on average which results in a better ROI.

GRIP ON MOVING ASSETS

SAVE TIME AND COSTS

- Create your own IoT network with gateway functionality
- Deploy your fleet more efficiently and increase equipment and staff utilisation with real-time track & trace
- Easily save on fuel consumption and reduce costs through insight into your drivers' driving behaviour
- Simplify maintenance management and avoid fines with remotely downloadable vehicle data and driver cards
- Only pay for what you use by easily enabling and disabling functionalities

MEER INFORMATIE:

+31(0)36-5382880

INFO@GPS-BUDDY.COM

WWW.GPS-BUDDY.COM